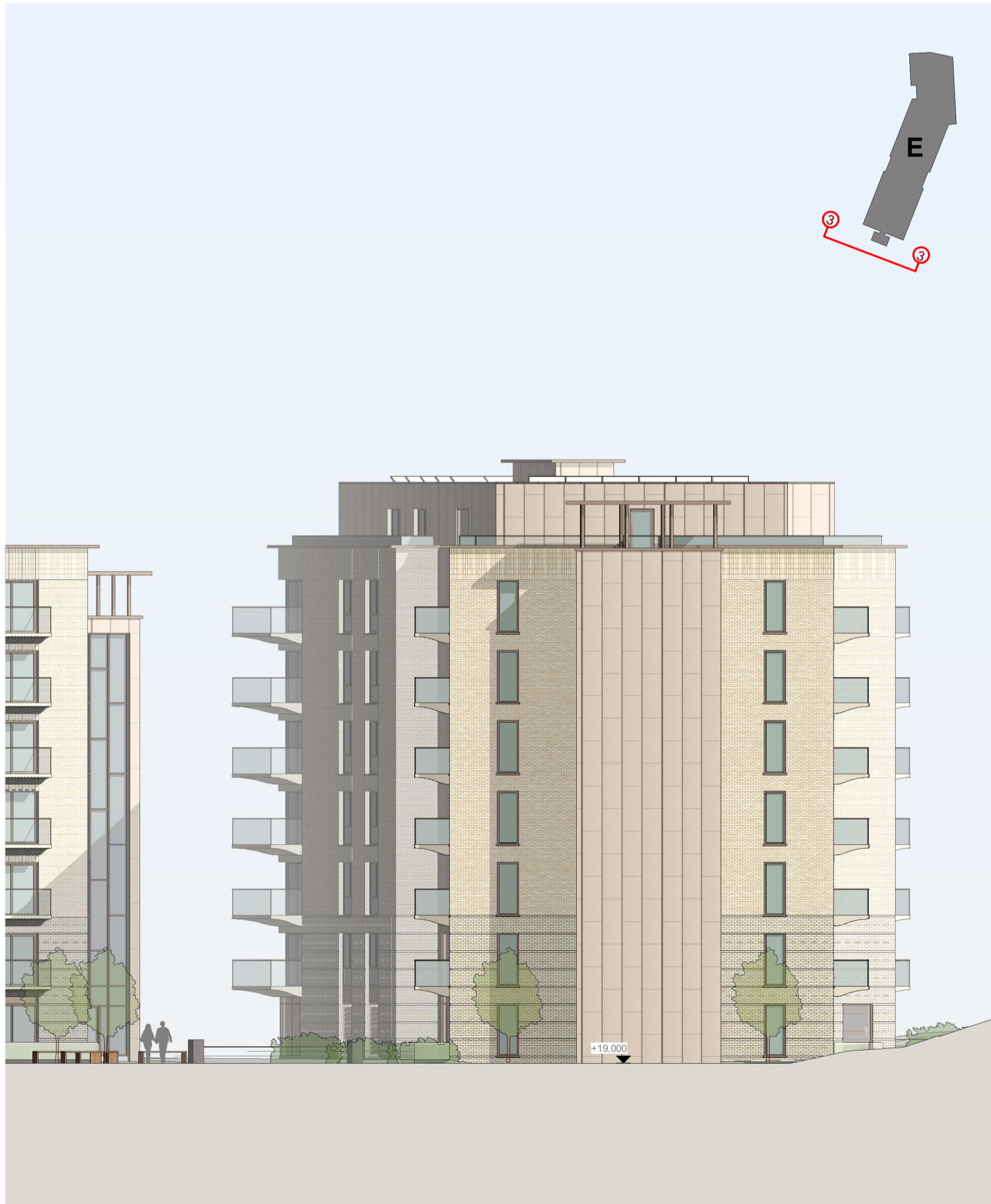


1 North Elevation
1:200



2 East Elevation (Flattened)
1:200



3 South Elevation
1:200



4 West Elevation (Flattened)
1:200

- 40,300 Level 7
- 37,300 Level 6
- 34,300 Level 5
- 31,300 Level 4
- 28,300 Level 3
- 25,300 Level 2
- 22,300 Level 1
- 19,300 Level 0

Rev:P02 Date:25.08.2020 Drw:KW Chk:SG
Revised Setback Windows
Rev:P01 Date:13.09.2019 Drw:FD Chk:SG
Planning Issue

Do not scale off this drawing
Report all errors and omissions to the Architect
Dimensions to be checked on site
Plot date: 11/09/2020 16:31:47

Client:
Southend United FC

Project:
Roots Hall - Southend on sea

Title:
Building E - GA Elevations Sheet 1

Drawing status:
For Planning